



## PROVIDING A FULLY INTEGRATED END TO END SERVICE THROUGHOUT ASIA AND BEYOND

With over 220 years of experience in storing, handling and transportation, Henry Bath can provide exceptional solutions to your commodity logistics and warehousing needs. Partnering with our parent company CMST also allows us to access mainland China and bridge all on shore and offshore opportunities.



At Henry Bath we have extensive capabilities and experience across a diverse range of products, offering you greater options and bespoke solutions to all your commodity requirements.

Our experienced product and logistics teams will ensure your commodities are handled, stored and transported safely and efficiently at competitive prices.

Our current portfolio includes ;

- Base Metals & Value Added products
- Ferro Metals
- Battery Metals
- Concentrates & Ore
- Coffee inc bulk & speciality
- Cocoa inc bulk & speciality
- Spices
- Natural and Synthetic Rubber







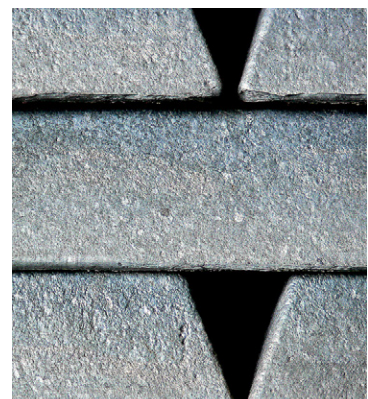
## METALS



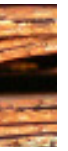
Henry Bath has a long-standing history and strong reputation in the exchange metals storage market, across our global locations we can offer a range of storage options with delivery to the major exchanges such as LME, CME, INE & SHFE (through CMST).

However we are so much more than just exchange storage. We are pleased to offer a number of services that provide you with a fully comprehensive end to end solution with one trusted partner.

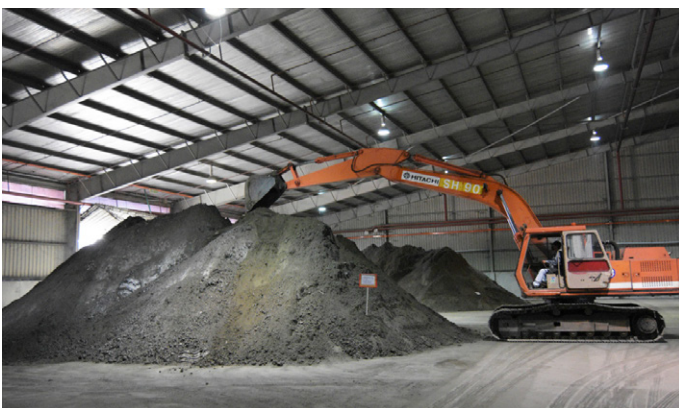
- Options on non exchange commodities, including value added & renewable energy products using our in house knowledge and expertise
- Logistics only options by working with a close network of suppliers and third parties. We can offer innovative routes for all logistics queries including options in break-bulk, rail, road and ship. We are able to transport your cargo quickly and safely
- Customs and related administration will be handled by our experienced teams to give you peace of mind of a smooth transaction
- On shore and off shore opportunities using our partnership with CMST under one ownership structure
- Henry Bath Warehouse Receipts can be issued from any of our regional offices giving you a competitive advantage and quick turnaround







**OUR FULL SERVICE CAPABILITY THROUGH HANDLING, LOGISTICS AND STORAGE, WITH BOTH PRIVATE COMMERCIAL CARGO AND EXCHANGE COMMODITIES OFFERS YOU THE BEST OPTIONALITY IN THE MARKET, ALLOWING US TO MINIMISE COSTS, TRANSACTION TIMES AND RISK.**



## DOCUMENT SECURITY

Our management and security risk controls are continually reviewed to ensure we are offering our client a first class service with peace of mind for all commodity transactions.

Our Warehouse receipts are recognised by exchanges, banks and insurers as premium documents, assuring the holder of legal title to the underlying goods.

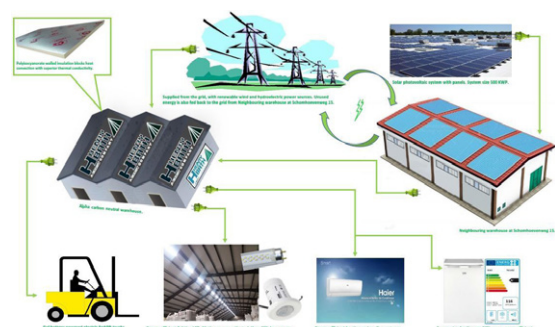
Henry Bath are further committed to creating a more secure environment. We are therefore offering our clients an additional option to authenticate our documents via TRAKK, giving you the assurance that when a Henry Bath document relating to title or transfer of ownership is received, its valid.

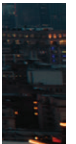
## SUSTAINABLE CARBON NEUTRAL 'ALPHA' WAREHOUSE

At Henry Bath we listen to the market to position ourselves correctly to make sure we are the supply chain partner you need. Sustainability and carbon neutrality are one of those ways we are adapting to meet your requirements.

Our Alpha warehouse, has a combined heating and power supply generated by renewable energy, solar, wind and hydro.

We are also working towards carbon neutrality goals and accreditation.





## HOW WORKING WITH HENRY BATH AND CMST CAN BENEFIT YOU

Henry Bath, in conjunction with CMST, can offer full service capability including reliable, efficient national and international logistics services.

CMST are China's largest integrated logistics company. They own more than 70 logistics distribution and operational facilities in more than 30 major Chinese ports.

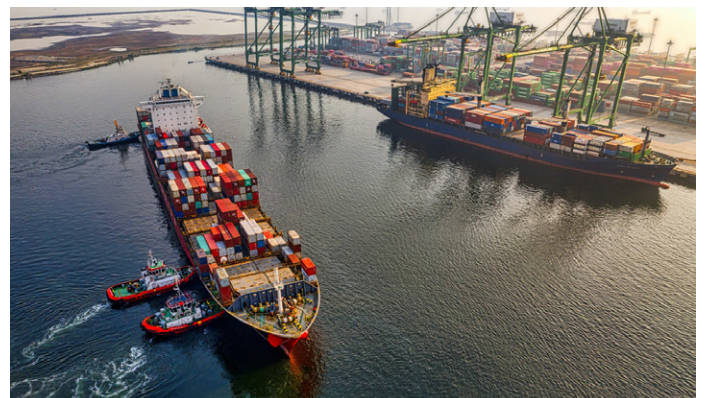
As part of the CMST group, we are able to access the wealth of knowledge and experience that CMST offer as well as the impressive logistical network.

Our integrated operating model avoids unnecessary logistics moves and shortens the communication channels improving efficiency for you.

Our one stop service convenience service improves transaction time, saves workload and gives you more opportunities

### CMST CAPABILITIES

- 1st grade international freight forwarding qualification
- FTZ approved warehouse to conduct the supervision system of goods status
- Material Inspection
- Local contacts with in depth knowledge and experience
- Customs clearance



Combined together, Henry Bath and CMST give you physical delivery options against all main Chinese and Western Exchanges allowing you to take advantage of arbitrage and physical market opportunities.

- INE SHFE LME CME DCE ICE

### OUR GLOBAL LOCATIONS



### CONTACT US

David Underwood  
Global Sales Director  
david.underwood@henrybath.com

Andy Low  
General Manager (Singapore & Malaysia)  
andy.low@henrybath.com

William Chen  
General Manager China  
william.chen@henrybath.com

Charles Park  
Chief Representative  
chul.park@henrybath.com



[www.henrybath.com](http://www.henrybath.com)