



PROVIDING A FULLY INTEGRATED END TO END SERVICE THROUGHOUT ASIA AND BEYOND

With over 220 years of experience in storing, handling and transportation, Henry Bath can provide exceptional solutions to your commodity logistics and warehousing needs. Partnering with our parent company CMST also allows us to access mainland China and bridge all on shore and offshore opportunities.



At Henry Bath we have extensive capabilities and experience across a diverse range of products, offering you greater options and bespoke solutions to all your commodity requirements.

Our experienced product and logistics teams will ensure your commodities are handled, stored and transported safely and efficiently at competitive prices.

Our current portfolio includes ;

- Base Metals & Value Added products
- Ferro Metals
- Battery Metals
- Concentrates & Ore
- Coffee incl bulk & speciality
- Cocoa incl bulk & speciality
- Spices
- Natural and Synthetic Rubber





ASIA (SOFTS)



We currently work across the following regions, however we are able to provide services for ad hoc requests in a variety of locations using our network of local & experienced on the ground agents.

- Korea
- Malaysia
- China
- Singapore

Henry Bath have a long-standing history and strong reputation in the exchange storage market and across our global locations we can offer a range of storage options with delivery to the major exchanges.

However we are so much more than just exchange storage.

Our teams are able to offer solutions on non exchange soft commodities including logistics only options.

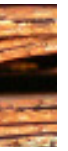
Henry Bath have a network of suppliers and third parties that we work closely with to provide you global logistics solutions to transport your cargo quickly and most importantly safely to where you need it to be.

We can discuss innovative routes for all logistics queries including options in break-bulk, rail, road and ship.

The Henry Bath teams will additionally handle all the relevant administration and related customs formalities from start to finish. We provide you with a complete end to end service taking out any additional risk to you by working with one trusted partner.

At Henry Bath we strive to ensure that we are able to provide our customers value for money, offering our softs clients access to a variety of other added services;

- Cargo surveying services
- Bean cutting and Analysis by FCC trained staff
- Temperature monitoring in real time
- Moisture analysis
- HACCP processes



OUR FULL SERVICE CAPABILITY THROUGH HANDLING, LOGISTICS AND STORAGE, WITH BOTH PRIVATE COMMERCIAL CARGO AND EXCHANGE COMMODITIES OFFERS YOU THE BEST OPTIONALITY IN THE MARKET, ALLOWING US TO MINIMISE COSTS, TRANSACTION TIMES AND RISK.



CONFIDENCE IN OUR SERVICE

Our management and security risk controls are continually reviewed to ensure we are offering our clients a first class service with peace of mind for all commodity transactions.

Henry Bath are committed to promote a more secure environment. We are therefore offering our clients an additional option to authenticate our documents via TRAKK, giving you the assurance that when a Henry Bath document relating to title or transfer of ownership is received, it's valid.

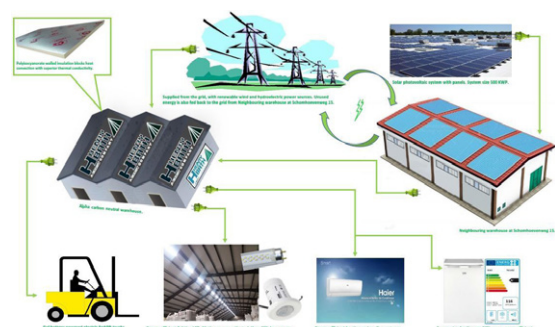
We are approved to store and handle both UTZ and Organic products and are able to offer options for bulk and specialty commodities. Our softs team come with a high level of experience and expertise in all areas so you can be assured of the highest quality service.

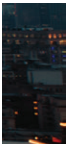
SUSTAINABLE CARBON NEUTRAL 'ALPHA' WAREHOUSE

At Henry Bath we listen to the market to position ourselves correctly to make sure we are the supply chain partner you need. Sustainability and carbon neutrality are one of those ways we are adapting to meet your requirements.

Our Alpha warehouse, has a combined heating and power supply generated by renewable energy, solar, wind and hydro.

We are also working towards carbon neutrality goals and accreditation.





HOW WORKING WITH HENRY BATH AND CMST CAN BENEFIT YOU

Henry Bath, in conjunction with CMST, can offer full service capability including reliable, efficient national and international logistics services.

CMST are China's largest integrated logistics company. They own more than 70 logistics distribution and operational facilities in more than 30 major Chinese ports.

As part of the CMST group, we are able to access the wealth of knowledge and experience that CMST offer as well as the impressive logistical network.

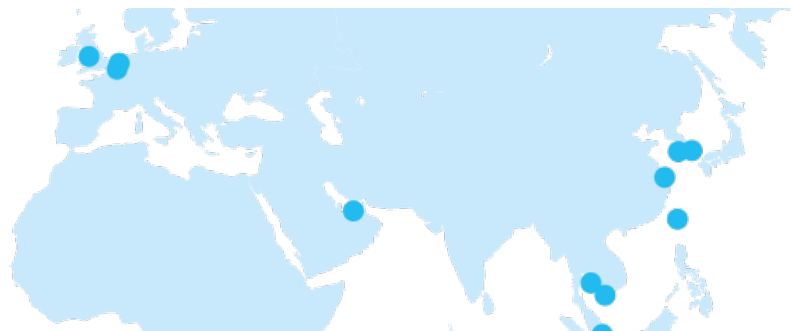
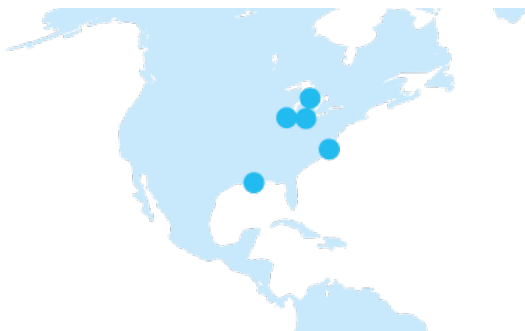
Our integrated operating model avoids unnecessary logistics moves and shortens the communication channels improving efficiency for you.

CMST CAPABILITIES

- 1st grade international freight forwarding qualification
- FTZ approved warehouse to conduct the supervision system of goods status
- Material Inspection
- Approved to move and store food grade products
- Customs clearance
- Local contacts



OUR GLOBAL LOCATIONS



CONTACT US

Andrew Stephenson
Group Softs Product Manager
andrew.stephenson@henrybath.com

Charles Park
Chief Representative
chul.park@henrybath.com



www.henrybath.com